



# Your guarantee for satisfied customers

3M™ Matched Component System™

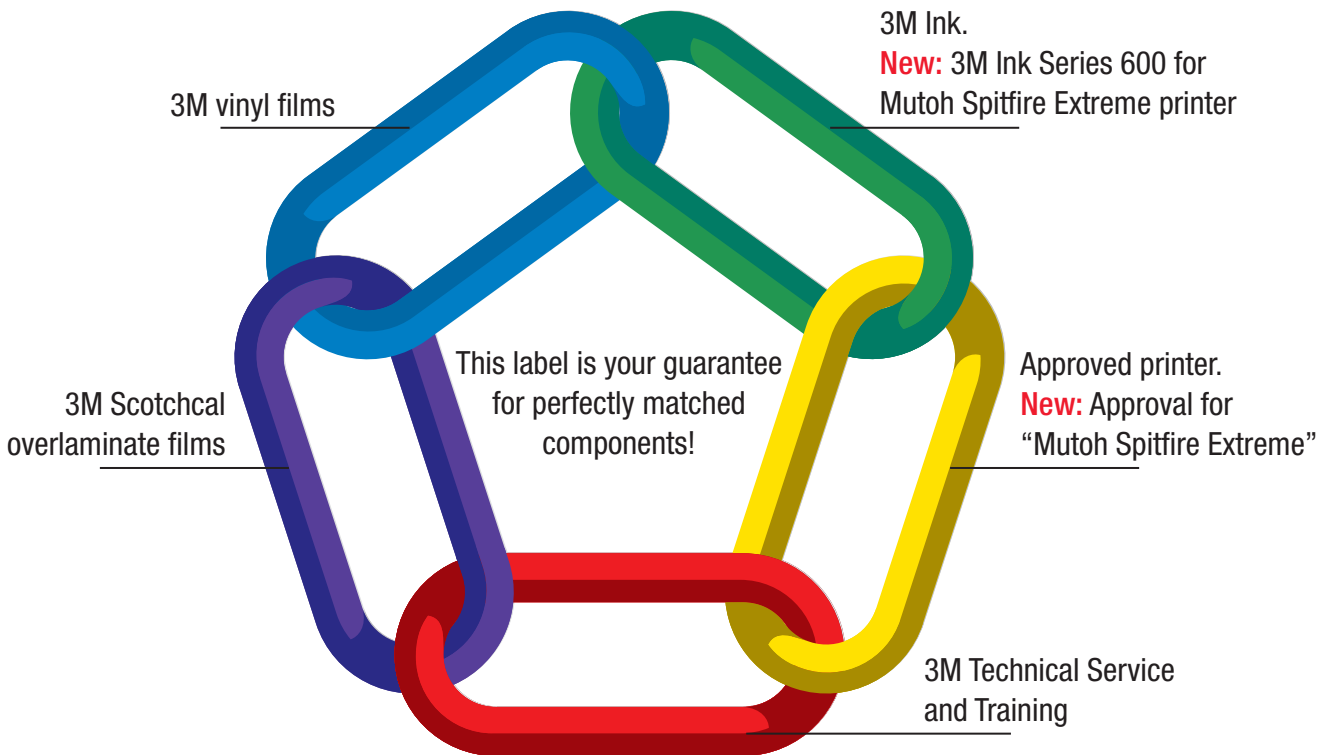
**New:**

Warranty approval of the Mutoh Spitfire Extreme printer and 3M Ink Series 600 for perfect commercial graphics!

# Rely on the Strongest Warranty in the Graphics Industry – the 3M™ MCS™ Warranty

Now also for  
Mutoh Spitfire Extreme printer

The unique 3M™ MCS™ Warranty guarantees your customers perfect graphics with long durability and highest quality even in the harshest environments. When you choose 3M’s matched component products you’ll know that every component has been designed, developed, tested and manufactured for superior performance and total compatibility. The result is a range of perfectly balanced products that print, cut, apply and perform consistently.

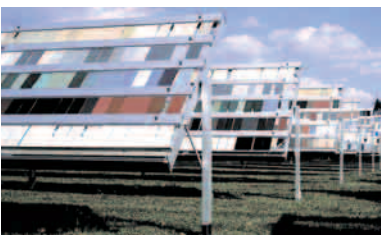


**3M eliminates the risks of graphic components failing to perform together. It provides you with a guarantee of long lasting quality.**



# 3M Testing Sites all over the World reassess the Warranty

3M operates weathering sites in various countries with very harsh climatic conditions to regularly reassess the 3M™ MCS™ Warranty. Testing sites are located for instance in Australia, Thailand, Japan, the USA or Egypt.



Natural weathering



Natural weathering



Artificial weathering

# Don't take a risk Typical Failures caused by Unmatched Components

Graphics made with components from different manufacturers may initially look the same as graphics covered by the 3M™ MCS™ Warranty, but they may not work well together. Unmatched chemistry can create problems like lifting, cracking, fading, shrinking, wrinkling and bubbling. When all components in a finished graphic are from 3M, the whole graphic is covered by the 3M™ MCS™ Warranty.

## Examples of graphic failure caused by unmatched components:



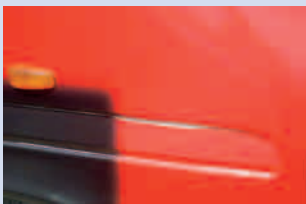
Lifting around rivets and bridging of corrugations



Ink cracking: Ink becomes brittle and inflexible



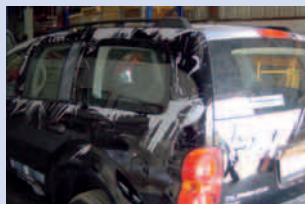
Premature Ink fading



Incompatible ink reacting with film and adhesive causes film lifting



Film shrinkage and tearing



Adhesive Residue after Film removal

# 3M™ MCS™ Warranty

3M ensures high quality and reliable graphic products that perform consistently and guarantees satisfied customers.

## Newly approved: Mutoh Spitfire Extreme 65/90

■ Colours	2 x 4
■ Width	65", 90"
■ Productivity	13 m <sup>2</sup> /h – 16 m <sup>2</sup> /h (540 x 740 dpi)
■ Resolution	360 ... 720 dpi

For details on Mutoh: [www.mutoh.be](http://www.mutoh.be)

## Newly approved: 3M Ink series 600 (mild solvent ink)

3M ID	
■ DR-5000-1073-8	3M Ink Jet Ink 691 Magenta 440 ml
■ DR-5000-1074-6	3M Ink Jet Ink 692 Yellow 440 ml
■ DR-5000-1076-1	3M Ink Jet Ink 695 Black 440 ml
■ DR-5000-1077-9	3M Ink Jet Ink 696 Cyan 440 ml

3M Cleaning Fluid	
■ DR-5000-1079-5	3M Cleaning Fluid 690, 250 ml bottle
■ DR-5000-1078-7	3M Cleaning Fluid 690, 220 ml cartridge

For details on the warranty given for the Mutoh Spitfire Extreme printer please ask for the technical data sheet.

Further information on MCS Warranty: [www.3m.com/uk/graphicsolutions](http://www.3m.com/uk/graphicsolutions).

Stamp of licensed supplier

### 3M Europe S.A./N.V. Commercial Graphics

Hermeslaan 7  
1831 Diegem  
Belgium  
Phone +32 2 722 4681  
[www.3m.com](http://www.3m.com)

Please recycle. Printed in Germany.  
© 3M 2007. All rights reserved.

